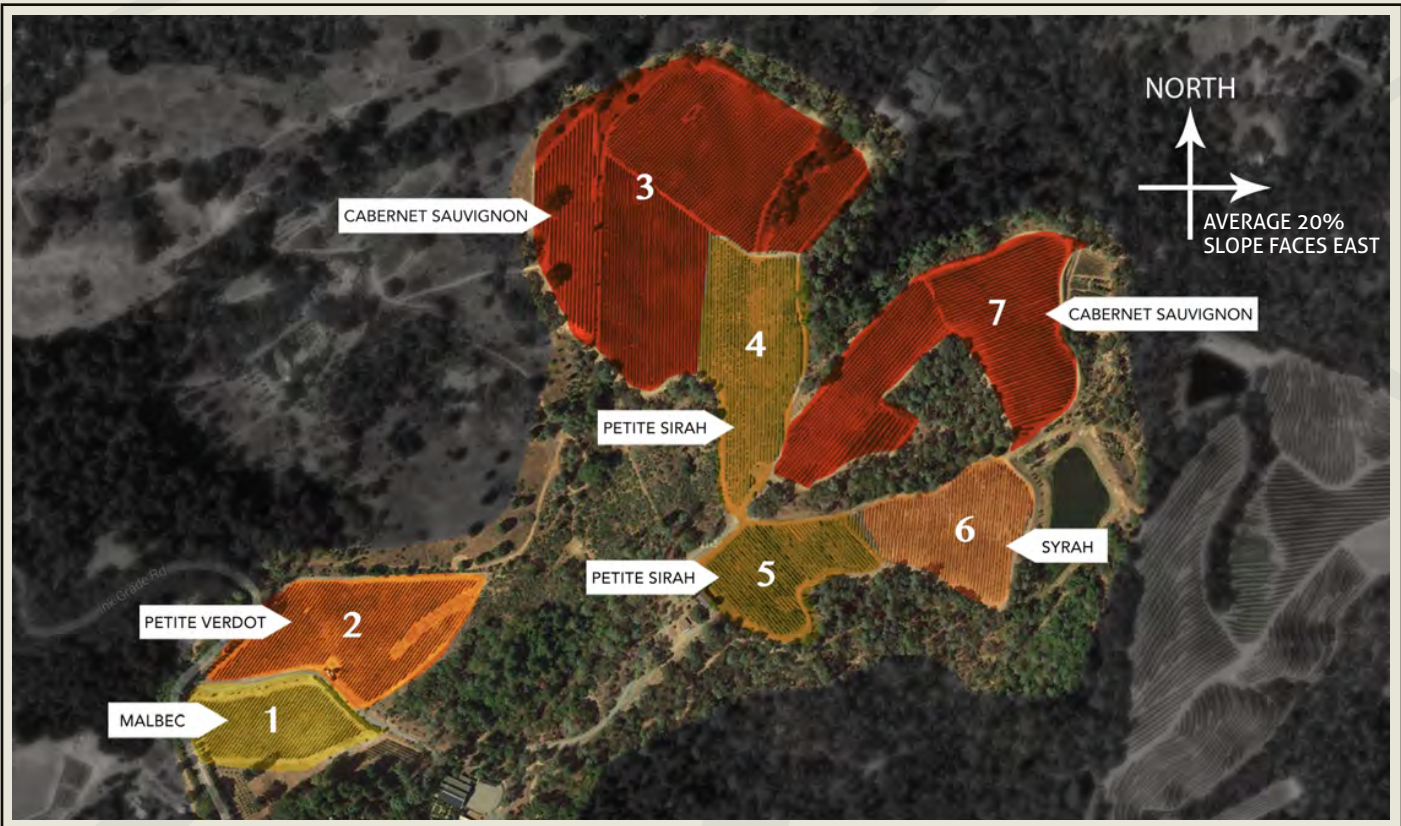


# Burgess

CELLARS

## HAYMAKER



### TECHNICAL INFO:

DEVELOPED: 1988

ELEVATION: 1200 FEET

SOIL: BUTTE STONEY LOAM

VINE ACRES: 31

VARIETIES: SYRAH, CABERNET SAUVIGNON, PETITE SIRAH, MALBEC & PETITVERDOT

### GENERAL:

AN EASTERN-FACING MOUNTAIN VINEYARD, LOCATED IN A FROST-FREE ZONE BETWEEN THE VALLEY FLOOR AND MOUNTAIN TOP WITH ANCIENT MARINE SEDIMENTARY SOILS

[www.burgesscellars.com](http://www.burgesscellars.com)

[vino@burgesscellars.com](mailto:vino@burgesscellars.com)

P. 707.963.4766 F. 707.963.8774

mailing: PO Box 282 • Saint Helena, CA 94574  
physical: 1108 Deer Park Road, Deer Park CA 94576